

FOUR NATIONS CHESS LEAGUE (4NCL)

GUILDFORD WIN THE DIVISION 1 CHAMPIONSHIP



By GM Tom Rendle and IM Shaun Taulbut

In the Division 1 Championship going into the final 5th weekend Guildford 1 and Cheddleton 1 were level in terms of match points having won all of their

matches. However, Guildford 1 won the match between the two teams on the last weekend by a wide margin as follows (look at Table 1).

Table 1

		Guildford 1		2629		Cheddleton 1		2552
111	w	Sadler, Matthew D	g	2680	1 - 0	Sokolov, Ivan	g	2628
112	b	Jones, Gawain C B	g	2671	½ - ½	Howell, David W L	g	2684
113	w	Anton Guijarro, David	*g	2679	1 - 0	Hawkins, Jonathan	g	2585
114	b	Van Kampen, Robin	g	2639	½ - ½	Grandelius, Nils	g	2641
115	w	Edouard, Romain	g	2631	1 - 0	Williams, Simon K	g	2452
116	b	Pert, Nicholas	g	2565	½ - ½	Fodor, Tamas Jr.	g	2513
117	w	Le Roux, Jean-Pierre	g	2542	1 - 0	Kirk, Ezra	f	2365
118	b	Milliet, Sophie	i	2352	1 - 0	Steil-Antoni, Fiona	wi	2155
					6½ - 1½			

This was the fifth successive championship success for Guildford who were led by Matthew Sadler and Gawain Jones. Guildford's team manager Roger Emerson also brought in David Anton, a strong Spanish Grandmaster, for the final weekend to add to their strong regular European GMs Robin van Kampen and Romain Edouard. Daniel Fernandez playing for Guildford made his third and final GM norm and Ravi Haria playing for Wood Green HK also made a GM norm.

The final standings of Division 1 are:

Guildford 1 (1st), Cheddleton 1 (2nd) and Guildford 2 (3rd).

We now look at some of the games and interesting positions from the 4th and final weekends.

Simon K Williams - David Guthrie

4NCL Division 1a Telford, ENG (7.14)

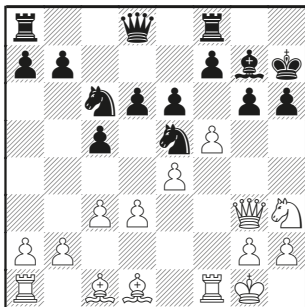
[Tom Rendle]

1.e4 c5 2.♘e2 ♖c6 3.d3 g6 4.f4 ♘g7
5.♗f3 ♗f6 6.0-0 0-0 7.♖e1 d6 8.♖h4

♙g4 8...b5 seems more to the point for Black here. Black should be playing on the queenside if possible.

9.♘bd2 ♙xf3 10.♘xf3 ♘d4 11.♙d1 e6 12.♘g5 h6 13.♘h3 ♘d7 14.♖g3 ♙h7 Black must seek counterplay in the centre with 14...d5! although White still has excellent attacking chances after 15.c3 ♘c6 16.f5.

15.c3 ♘c6 16.f5 ♘de5



17.♙c2 17.♙g5! is perhaps even stronger here as Black is forced to accept a bad position for no material as compensation. 17...f6 (not 17...hxg5? 18.♘xg5+ ♙g8 19.♖h4 and Black has to give up his queen to slow down the attack.; 17...♙f6 18.fxg6+ fxg6 19.♖xf6! ♖xf6 20.♖h4 is also game over for Black.) 18.fxg6+ ♘xg6 19.♙e3 and White clearly has a significant advantage, albeit with some work still to do.

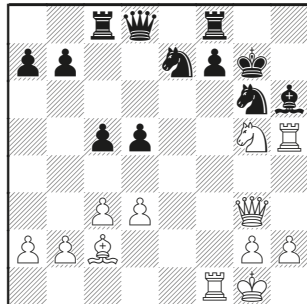
17...exf5 18.exf5 gxf5 18...♙f6 is objectively a better chance but Black's position is hardly pleasant after 19.♙e3 g5 20.♘f2.

19.♖xf5 ♘g6 20.♖h5 An unusual rook manoeuvre but certainly an effective one here. Simon increases the pressure on h6 and in the medium term there is no way to defend.

20...♘ce7 21.♙f4 d5 22.♖f1 ♖c8? This allows the final breakthrough which Simon

executes in fine style. 22...♘xf4 23.♘xf4 d4 and Black can struggle on.

23.♙xh6! ♙xh6 24.♘g5+ ♙g7



25.♖xh6! Another sacrifice on h6 and the black king is driven out into the open.

25...♙xh6 26.♖xf7 ♖h8 26...♖xf7 27.♘xf7+ avoids mate but costs Black the queen on d8.

27.♖h3+! ♙xg5 28.♖e3+ ♙h4 29.♖g3+ ♙h5 30.♙d1+ ♙h6 31.♖e3+ ♘f4 32.♖xf4+ ♙g6 33.♖f6# .

1-0

A beautiful king hunt to end a fine attacking game from the *Ginger GM*.

Andrew Dunn – Matthew D Sadler

4NCL Division 1b Telford, ENG (7.52)

[Tom Rendle]

For Guildford 1 Matthew Sadler has probably been the best player so far. Normally to be found on board 1, he still scored 7.5/8, dropping only half a point with a draw as Black against Peter Wells back in round 3. Here we join him in complete control against North East England's Andrew Dunn.

1.d4 ♘f6 2.♘f3 c5 3.e3 d5 4.♙d3 ♘c6 5.c3 ♙g4 6.h3 ♙h5 7.♘bd2 e6 8.♖a4 ♘d7 9.0-0 ♘c8 10.♖e1 ♙e7 11.♘e5 ♘cxe5 12.dxe5 0-0 13.♖c2 ♘xe5 14.♙xh7+ ♙h8 15.♙d3 ♘xd3 16.♖xd3 c4 17.♖c2